

# ELEMENT

3" DOWNLIGHTS

E3:  
THE NEXT  
GENERATION



# INTRODUCING THE NEXT GENERATION ELEMENT'S NEW AND IMPROVED 3" DOWNLIGHTS

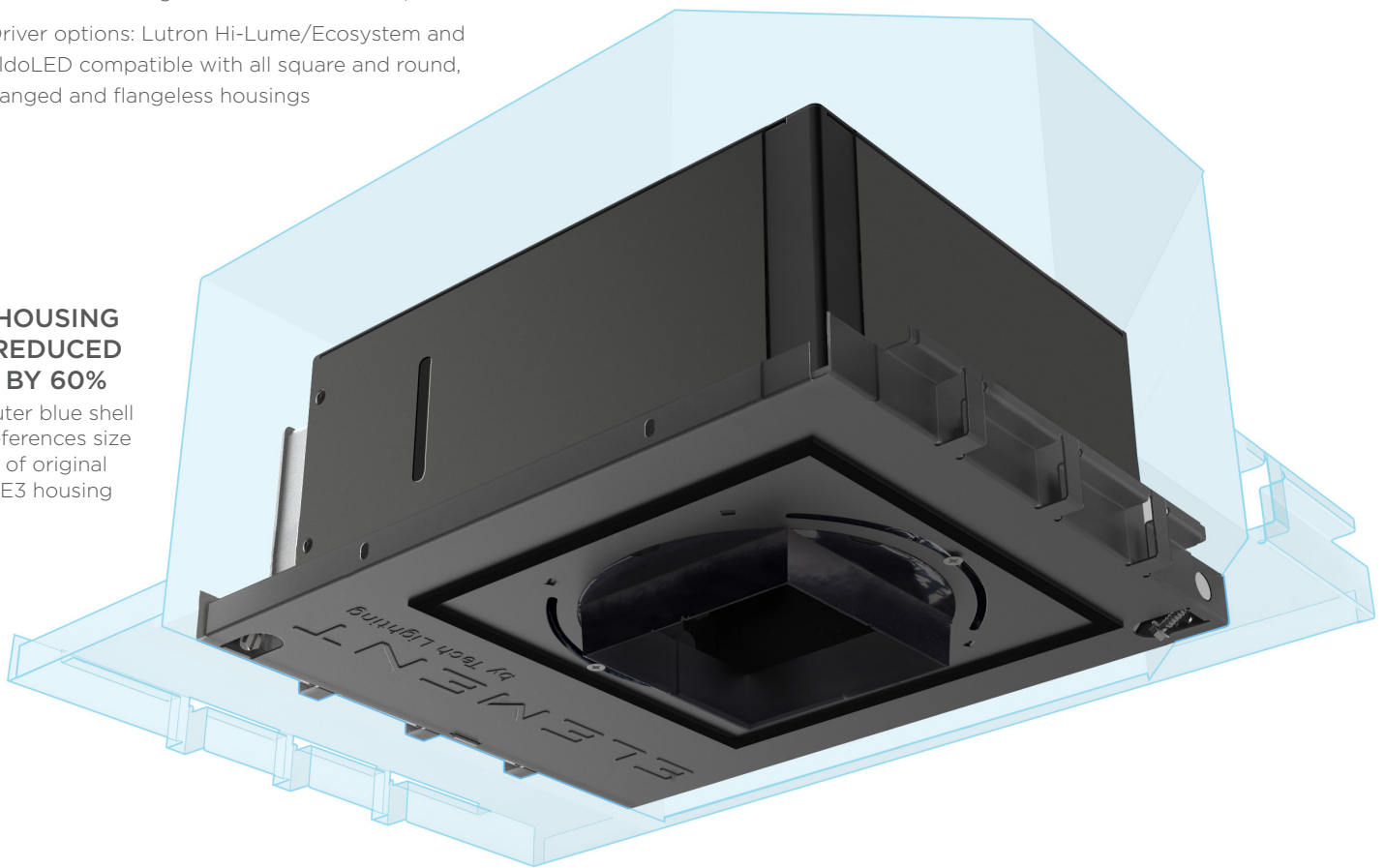
Since inception, Tech Lighting's ELEMENT line of architectural downlights has continually innovated to meet the performance and functionality demands of professional lighting specifiers. Now, with a dramatic redesign of its core platforms, Tech Lighting is introducing the Next Generation of ELEMENT Downlights, which further improves upon ELEMENT's most popular features.

## IMPROVED DESIGN AND PERFORMANCE

- Housing size reduced by 60% (ELEMENT 3" Adjustable Housing)
- Increased efficacy: 11% wattage reduction while maintaining lumen output
- 2-step McAdam ellipses standard
- Premium dimming: <1% standard for Triac/ELV
- Driver options: Lutron Hi-Lume/Ecosystem and eldoLED compatible with all square and round, flanged and flangeless housings
- Xicato Standard and Artist Series LED options
- Best-in-Class Wall Wash
- True 10° optic (19, 414 CBCP)
- High output warm dim, <1% standard for Triac/ELV dimming (1300 lumens, 3000-1800K)

### HOUSING REDUCED BY 60%

outer blue shell  
references size  
of original  
E3 housing



## ENHANCED QUIET CEILING FEATURES

- LED Module aiming mechanism hardware minimized and moved away from the aperture to reduce visibility from below the ceiling
- The interior features low reflectance black powder coat to minimize flash and visibility of housing structure
- Specular reflector shielding options to close interior visibility

## SIMPLIFIED INSTALLATION AND SERVICE

- Simple twist-off cap for optics change out
- Easy-access LED module allows simple CCT changes or Warm Color Dimming upgrade from below the ceiling
- 45° collar adjustment across the Next Gen 3" platform for precise alignment of square trims

# TOOL-FREE AIMING & LOCKING

## FOR EASY ADJUSTMENT IN CRITICAL SITUATIONS

With a keen understanding of the challenges that face lighting designers whether it be in commercial spaces where light levels and aiming are critical, or in residential settings where comfort and ambiance are the measure of a lighting design's success, ELEMENT engineers have set new standards for aiming and scene-setting.

### 0°- 40° TILT, HOT-AIMING

- Center beam maintained through aperture during tilt
- Tool-free tilt and lock with fixture powered on

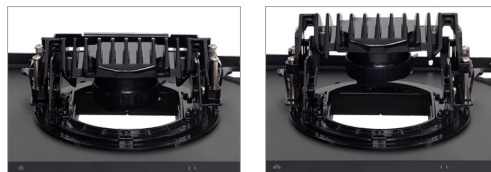


0° Tilt

40° Tilt

### PATENTED HIGH-LOW LAMP POSITIONS

- Innovative high-low functionality allows lamp placement in low position for maximum light output or high position for a quieter ceiling and to reduce glare
- Helps reduce cut-off at severe angles

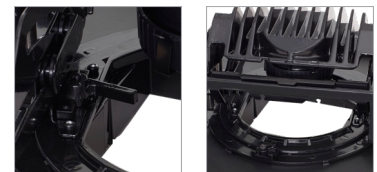


Low-Position

High-Position

### 361° ROTATION TOOL-FREE

- Easy to use cam lever for rotation lock
- Moving rotation stop allows for up to 361° rotation without dead spots

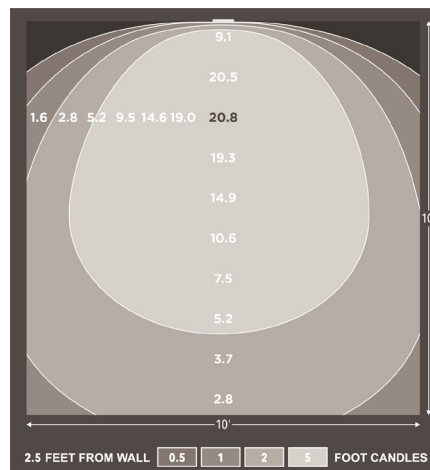


Tool-Free Locking

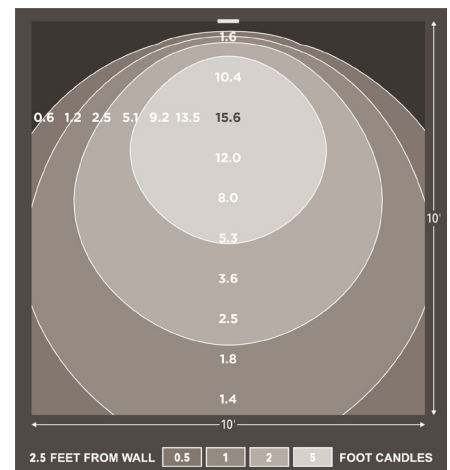
361° Pan Rotation

## WALL WASH BEST-IN-CLASS

- 1340 lumens
- 79 lumens per watt
- 21 foot candles max
- Wall Height: 5 foot candles within 4 inches of ceiling
- Even vertical and horizontal illumination
- Precision-Engineered Luminit Turning Film



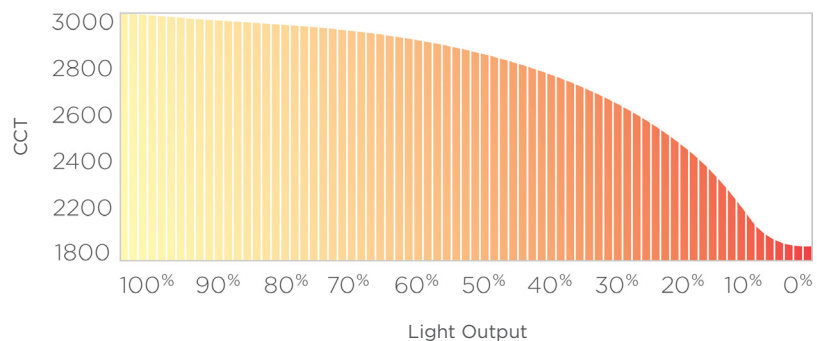
E3 Next Generation



Leading Competitor

## WARM DIM

- 1300 lumens
- 76 lumens per watt
- Premium dimming: <1% standard for Triac/ELV





7400 Linder  
Skokie, IL 60077

T 847.410.4400  
F 847.410.4500

Quotes & Technical Assistance:  
800.522.5315

Enhanced Solutions Group  
[esg@visualcomfortgroup.com](mailto:esg@visualcomfortgroup.com)

[techlighting.com](http://techlighting.com)

921E3NEXTGENBRO19