

# ELEMENT™ 2" CYLINDER

## ADJUSTABLE CYLINDER

Enhance your lighting with the ELEMENT 2" Adjustable Cylinders. This versatile fixture offers adjustable tilt 0° to 90° and 360° rotation for precise light direction. Highlight architectural features and illuminate specific areas with ease.

Customize your lighting effects using interchangeable optics. Enjoy a soft, uniform appearance and reduce glare with the recessed LED design. Choose between static white or warm dim lighting to create the perfect ambiance.

- Aiming: 0°–90° tilt and 360° rotation
- Field interchangeable optics: 20°, 30°, 40°, and 60°
- 1-step for static white 2700K, 3000K, and 3500K; and 2-step for all other configurations
- Available in 2" and 3" fixed and adjustable options; 3" available in wall wash
- Flush, surface, conduit, and pendant mounting options
- Several lens and louver options including Solite Soft Focus
- Decorative trims available in solid natural brass, crystal, walnut, weathered oak wood, and alabaster



SHOWN IN BLACK

### LUMEN/CBCP MULTIPLIERS

CCT	80 CRI MULTIPLIER	90 CRI MULTIPLIER
2200K	—	0.60
2400K	—	0.83
2700K	—	0.98
3000K	—	1.00
3500K	1.21	—

Lumen output will vary by CCT and CRI. See photometric charts for output information.

### SPECIFICATIONS

WATTAGE	STATIC WHITE		WARM DIM	
	Lumens	Efficacy	Lumens	Efficacy
12W	865	78	699	59
15W	1064	72	888	56
CRI	80+, 90+		90+	
CCT	2200K, 2400K, 2700K, 3000K, or 3500K		3000K–1800K	
COLOR CONSISTENCY	1-step (2-step for 2200K, 2400K)		2-step	
VOLTAGE	120V or 277V			
DIMMING <sup>1</sup>	Standard reverse-phase, forward-phase, TRIAC, and 0–10V dimming down to 1% eldoLED 0–10V Linear & Logarithmic UNV down to 0.1% eldoLED DALI-2 down to 0.1% Lutron Hi-lume 0.1% EcoSystem			
POWER SUPPLY	Constant current driver with +0.9 power factor and +80% efficiency			
BEAM SPREAD	Interchangeable optics: 20°, 30°, 40°, or 60°			
ADJUSTABILITY	0°–90° tilt, 360° rotation			
CEILING APPEARANCE	Flush mount Surface mount (canopy) Pendant mount (canopy) Conduit mount (j-box)			
CONSTRUCTION	Cylinder: Aluminum			
FINISH	White or Black			
GENERAL LISTINGS	ETL Listed. Damp Location			
CALIFORNIA TITLE 24	Registered CEC appliance database. Complies with CEC 2019 Title 24 Part 6 (JA8-2016, JA8-2019) (for 90 CRI versions).			
L70	50,000 hours min			
WARRANTY <sup>2</sup>	5 years			

Data in chart reflects 3000K/90 CRI values, unless otherwise noted.

Ordering grids available on page 2.

<sup>1</sup>See visualcomfort.com for dimmer compatibility.

<sup>2</sup>Visit visualcomfort.com for specific warranty limitations and details.

# ELEMENT™ 2" CYLINDER

## ADJUSTABLE CYLINDER

### ORDERING GRIDS

#### CYLINDER

PRODUCT	MOUNTING	OUTPUT	CRI/CCT	BEAM SPREAD	FUNCTION	REFLECTOR	DRIVERS <sup>5</sup>	CYLINDER FINISH
<b>EC2R</b> ELEMENT CYLINDERS 2" ROUND	<b>F</b> FLUSH MOUNT <sup>1</sup>	<b>-12</b> 12W	<b>835</b> 80 CRI, 3500, 1-STEP	<b>2</b> 20°	<b>A</b> ADJUSTABLE	<b>N</b> NO LENS <b>L</b> LENSED/ DECORATIVE <sup>4</sup>	<b>DRIVERS 120V/277V</b> <b>-UNV</b> UNIVERSAL PHASE/0-10V 1% <sup>6</sup> <b>-ELDO</b> ELDOLED 0.1% 0-10V LINEAR <b>-ELDOA</b> ELDOLED 0.1% 0-10V LOGARITHMIC <b>-ELDD</b> ELDOLED 0.1% DALI-2 <b>-HLECO</b> LUTRON HI-LUME 0.1% ECOSYSTEM	<b>-B</b> BLACK <b>-W</b> WHITE
	<b>S</b> SURFACE MOUNT (CANOPY)	<b>-15</b> 15W	<b>922</b> 90 CRI, 2200K, 2-STEP	<b>3</b> 30°				
	<b>P</b> PENDANT MOUNT (CANOPY) <sup>2</sup>		<b>924</b> 90 CRI, 2400K, 2-STEP	<b>4</b> 40°				
			<b>927</b> 90 CRI, 2700K, 1-STEP	<b>6</b> 60°				
	<b>C</b> CONDUIT MOUNT (J-BOX) <sup>3</sup>		<b>930</b> 90 CRI, 3000K, 1-STEP					
		<b>9WD31</b> 90 CRI, WARM DIM, 3000-1800K, 2-STEP						

<b>EC2R</b>	-				<b>A</b>		-	-
-------------	---	--	--	--	----------	--	---	---

For dimming details, refer to dimmer compatibility chart.

<sup>1</sup>F - Flush mount includes an adapter plate to convert junction box before ceiling install and a remote driver enclosure for all driver options.

<sup>2</sup>P - Pendant mount requires selection of Pendant Stem Accessory Kit. See part numbers below.

<sup>3</sup>C - Conduit mount includes a remote driver enclosure for all driver options.

<sup>4</sup>Standard Cylinder Reflectors do not accommodate lens accessories. Lens/louvers and decorative accessories ordered separately (see part numbers below). Limit 1 optical element. Lenses and louvers are not compatible with decorative accessories. To use with a lens/louver accessory order ELC2LK kit. To use with a decorative accessory order EC2DA kit and specify finish.

<sup>5</sup>The drivers in ELEMENT Cylinders must be located either in the junction box or in a remote location. Reference the Driver J-Box Compatibility Chart below for guidance. When the driver is listed as Remote, a remote enclosure that is 4" x 8" x 1.8" is provided. All non-UNV drivers are remote. All flush and conduit drivers are remote.

<sup>6</sup>UNV - Universal dimming is reverse-phase, forward-phase, TRIAC, and 0-10V. 277V is only compatible with 0-10V dimming.

#### DRIVER J-BOX COMPATIBILITY CHART

	12W AND 15W UNIVERSAL	12W AND 15W LUTRON/ELDOLED
<b>2" FLUSH MOUNT</b>		
4" OCTAGON	REMOTE	REMOTE
4" SQUARE		
20 CU IN CEILING BOX		
<b>2" SURFACE MOUNT (CANOPY)   PENDANT MOUNT (CANOPY)</b>		
4" OCTAGON	FITS IN J-BOX	REMOTE
4" SQUARE		
20 CU IN CEILING BOX		
<b>2" CONDUIT MOUNT (J-BOX)   CORD MOUNT (CANOPY)</b>		
4" OCTAGON	REMOTE	REMOTE
4" SQUARE		
20 CU IN CEILING BOX		

#### REPLACEMENT OPTICS

PRODUCT	BEAM SPREAD
<b>353LEDGATOPT</b>	<b>20</b> 20° <b>30</b> 30° <b>40</b> 40° <b>60</b> 60°
<b>353LEDGATOPT</b>	

#### PENDANT STEMS

PRODUCT <sup>1</sup>	LENGTH <sup>2</sup>	FINISH
<b>ECPS</b>	<b>12</b> 12"	<b>B</b> BLACK <b>W</b> WHITE
	<b>24</b> 24"	
	<b>36</b> 36"	
	<b>48</b> 48"	
	<b>60</b> 60"	
	<b>72</b> 72"	

#### ECPS

<sup>1</sup>Required for Pendant Mount only.

<sup>2</sup>Consult Quotes Department for custom lengths to the inch.

#### LENS/LOUVER KIT

PRODUCT <sup>1</sup>	TYPE	REFLECTOR FINISH
<b>ELCY2LK</b>	<b>SF</b> SOLITE SOFT FOCUS LENS	<b>B</b> BLACK <b>W</b> WHITE
	<b>SB</b> SANDBLASTED LENS	
	<b>LL</b> LINEAR SPREAD LENS	
	<b>EC</b> EGGCRATE/HEXCELL LOUVER	

#### ELCY2LK

<sup>1</sup>Required for use with lenses or louvers. Kit includes a reflector and one lens or louver. For use with Lensed Reflector Cylinders or to convert a No Lens Reflector. Replacement lenses and louvers can be ordered separately. ELEMENT Cylinders accommodate one lens or louver. Lens/louver kit is not compatible with decorative accessories.

#### CYLINDERS DECORATIVE ACCESSORIES

PRODUCT <sup>1</sup>	FINISH
<b>EC2DA</b>	<b>SNB</b> SOLID NATURAL BRASS
	<b>CLC</b> CLEAR CRYSTAL
	<b>WAW</b> WALNUT WOOD
	<b>WOW</b> WEATHERED OAK WOOD
	<b>ALB</b> ALABASTER

#### EC2DA

<sup>1</sup>For use with Lensed Reflector Cylinders or to convert a No Lens Reflector Cylinder. Lenses and louvers are not compatible with decorative accessories.

#### VAULTED CEILING ADAPTER

PRODUCT	FINISH
<b>ELCVA</b> PENDANT MOUNT <sup>1</sup>	<b>B</b> BLACK <b>W</b> WHITE

<sup>1</sup>For use with Pendant Mount Cylinder with or without Stems. Accommodates slopes up to 45 degrees. Adds 1.7" to the overall length of the stem.

#### REPLACEMENT LENSES FOR LENS/LOUVER KIT

PRODUCT <sup>1</sup>
<b>MOCSF</b> SOLITE SOFT FOCUS LENS
<b>MOCSB</b> SANDBLASTED LENS
<b>MOCLL</b> LINEAR SPREAD LENS
<b>MOCEC</b> EGGCRATE/HEXCELL LOUVER

<sup>1</sup>Lenses and louvers are not compatible with decorative accessories.

# ELEMENT™ 2" CYLINDER

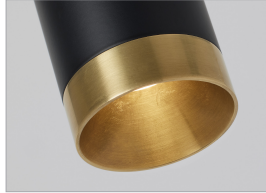
## ADJUSTABLE CYLINDER

DECORATIVE ACCESSORIES

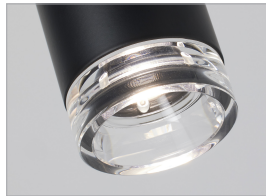
---



SOLID NATURAL BRASS



CLEAR CRYSTAL



WALNUT WOOD



WEATHERED OAK WOOD



ALABASTER



# ELEMENT™ 2" CYLINDER

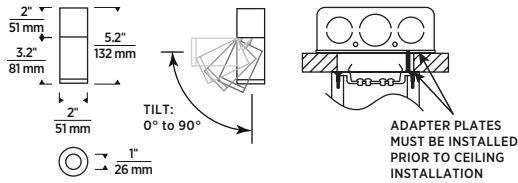
## ADJUSTABLE CYLINDER

### CYLINDERS

#### FLUSH MOUNT



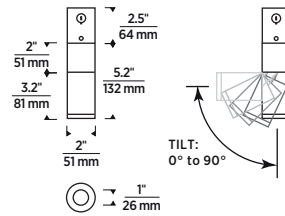
WHITE OR BLACK; TILTS UP TO 90°



#### CONDUIT MOUNT (J-BOX)



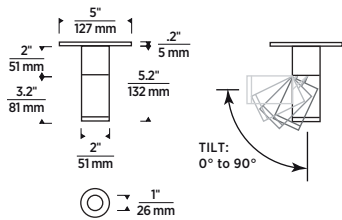
WHITE OR BLACK; TILTS UP TO 90°



#### SURFACE MOUNT (CANOPY)



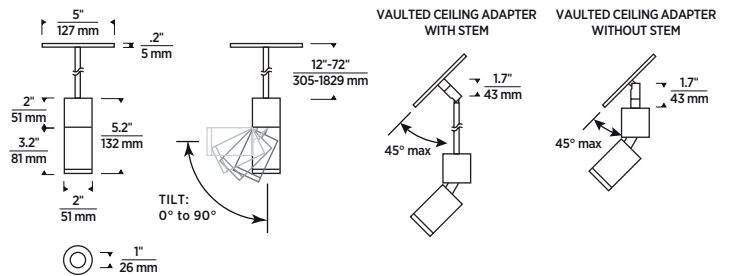
WHITE OR BLACK; TILTS UP TO 90°



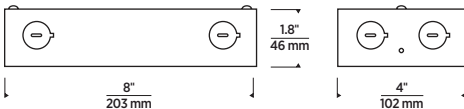
#### PENDANT MOUNT (CANOPY)



WHITE OR BLACK; TILTS UP TO 90°



#### REMOTE DRIVER J-BOX



# ELEMENT™ 2" CYLINDER

## ADJUSTABLE CYLINDER

### PHOTOMETRICS

Description: 2" Cylinder Fixed  
20° Beam  
90 CRI, 3000K

Input Power (Watts): 15.19  
Input Power Factor: 0.99  
Absolute Luminous Flux (Lumens): 908  
Lumen Efficacy (Lumens per Watt): 60

Output difference between CCTs - 5%, CRIs - 15%.

Description: 2" Cylinder Fixed  
30° Beam  
90 CRI, 3000K

Input Power (Watts): 14.8  
Input Power Factor: 0.98  
Absolute Luminous Flux (Lumens): 944  
Lumen Efficacy (Lumens per Watt): 64

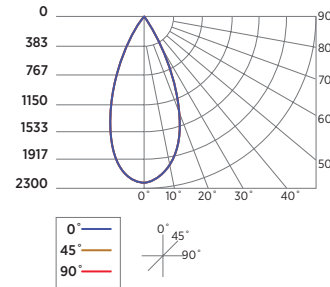
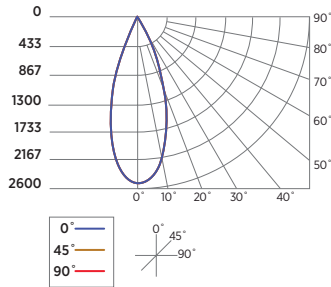
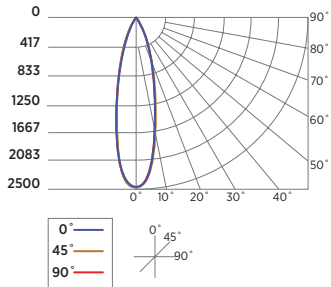
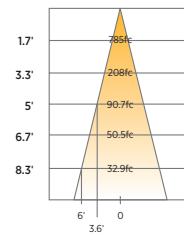
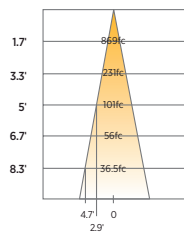
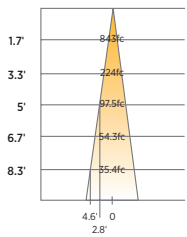
Description: 2" Cylinder Fixed  
40° Beam  
90 CRI, 3000K

Input Power (Watts): 14.8  
Input Power Factor: 0.98  
Absolute Luminous Flux (Lumens): 1063  
Lumen Efficacy (Lumens per Watt): 72

ANGLE	0°	45°	90°
0°	2437	2437	2437
5°	2227	2218	2214
10°	1764	1781	1778
15°	1268	1276	1287
20°	821	835	850
25°	459	466	472
30°	239	243	242
35°	133	134	129
40°	86	86	81
45°	57	57	52
50°	40	42	36
55°	23	24	20
60°	16	16	13
65°	12	12	9
70°	6	7	5
75°	4	5	3
80°	3	3	3
85°	2	2	2
90°	0	0	0

ANGLE	0°	45°	90°
0°	2513	2513	2513
5°	2396	2371	2397
10°	1899	1896	1982
15°	1236	1241	1382
20°	686	713	826
25°	370	382	444
30°	203	202	231
35°	108	111	121
40°	61	62	70
45°	35	36	41
50°	26	26	29
55°	17	16	17
60°	10	10	11
65°	8	7	8
70°	3	3	3
75°	2	2	2
80°	1	1	1
85°	1	1	0
90°	0	0	0

ANGLE	0°	45°	90°
0°	2267	2267	2267
5°	2185	2167	2186
10°	1945	1923	1968
15°	1562	1532	1591
20°	1094	1084	1118
25°	668	653	673
30°	344	330	342
35°	158	156	159
40°	72	68	75
45°	34	33	35
50°	18	18	19
55°	10	10	11
60°	7	7	7
65°	5	5	5
70°	2	2	2
75°	1	1	1
80°	1	1	1
85°	0	0	0
90°	0	0	0



# ELEMENT™ 2" CYLINDER

## ADJUSTABLE CYLINDER

PHOTOMETRICS, CONT.

Description: 2" Cylinder Fixed  
60° Beam  
90 CRI, 3000K

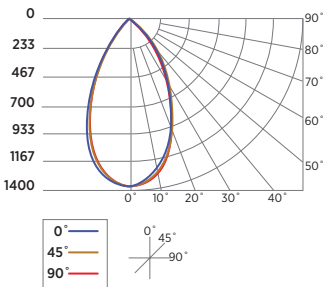
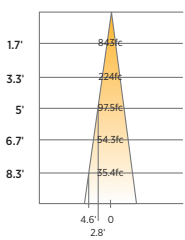
Input Power (Watts): 14.9

Input Power Factor: 0.99

Absolute Luminous Flux (Lumens): 1150

Lumen Efficacy (Lumens per Watt): 77

ANGLE	0°	45°	90°
0°	1356	1356	1356
5°	1315	1311	1328
10°	1199	1209	1243
15°	1041	1059	1107
20°	858	871	933
25°	672	678	726
30°	489	489	526
35°	341	339	365
40°	231	227	240
45°	137	134	139
50°	77	73	73
55°	44	40	39
60°	24	22	22
65°	10	8	9
70°	3	3	3
75°	2	2	2
80°	1	1	1
85°	1	1	1
90°	0	0	0



# ELEMENT™ 2" CYLINDER

ADJUSTABLE CYLINDER

**PROJECT INFORMATION**

---

**JOB NAME AND INFORMATION**

---

---

---

---

---

---

---

---

---

---

**FIXTURE TYPE AND QUANTITY**

---

---

---

---

---

---

---

---

---

---

**NOTES**

---

---

---

---

---

---

---

---

---

---

---

---

---

---

---

---

---

---

---

---

---

---

---

---